

2021 ENRICHMENT CLASS INFORMATION SESSION



Seek the Way of Life

WELCOME
TO
WHITEBRIDGE HIGH SCHOOL

PROGRAM

- Introduction
- Educational philosophy
- Differentiated Instruction
- What is different
- Process for application
- Questions ?



Educational Philosophy

Whitebridge High School is a future focused educational community committed to the values of respect, responsibility and learning. We foster individual talents in an inclusive environment building capacity for lifelong learning

VALUES

- That **LEARNING** is valuable, enjoyable and continues for life.
- **RESPECT** for ourselves, other people, their belongings and the environment.
- That individuals should take **RESPONSIBILITY** for their own learning and behaviour.

ABOUT OUR SCHOOL

- Approx. 1000 students and 100 staff
- Executive Leadership team – Principal, 3 x Deputy Principals, 11 Head Teachers
- 78 highly skilled teaching staff
- Librarian, LAST, Careers Adviser, School Student Support Officer, Counsellors
- Support staff and SLSO's
- 5 x 60 minute periods each day
- Students at the centre of decision making



FEATURES of WHITEBRIDGE HIGH

- ▣ Sense of community, comprehensive high school
- ▣ Diverse curriculum, language, music, drama, dance, debating, ceramics, visual arts
- ▣ Supportive student wellbeing and leadership programs. Active SRC and student governance programs.
- ▣ School dress code – high levels of student compliance and pride. Strong parent support
- ▣ Learning assistance program.
- ▣ Gifted and Talented Education
- ▣ Sport and Wilderness programs including Duke of Edinburgh
- ▣ Peer Mediation and conflict resolution

Opportunity, Opportunity, Opportunity

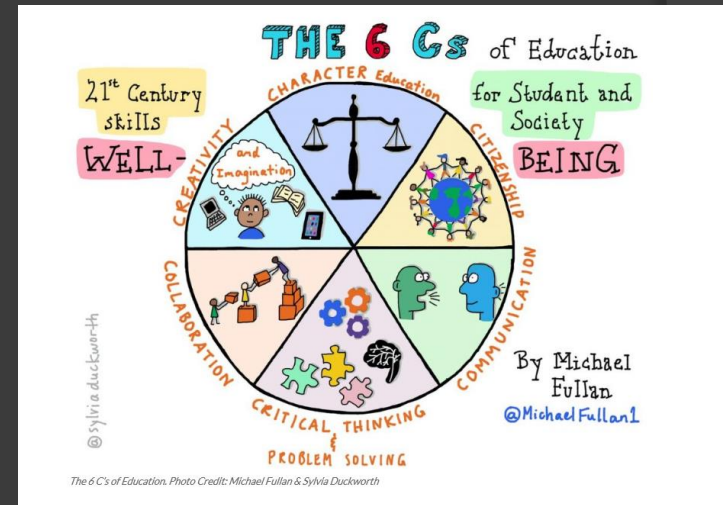
You can lead a horse to water...



But you can't make it think.

Differentiated Instruction

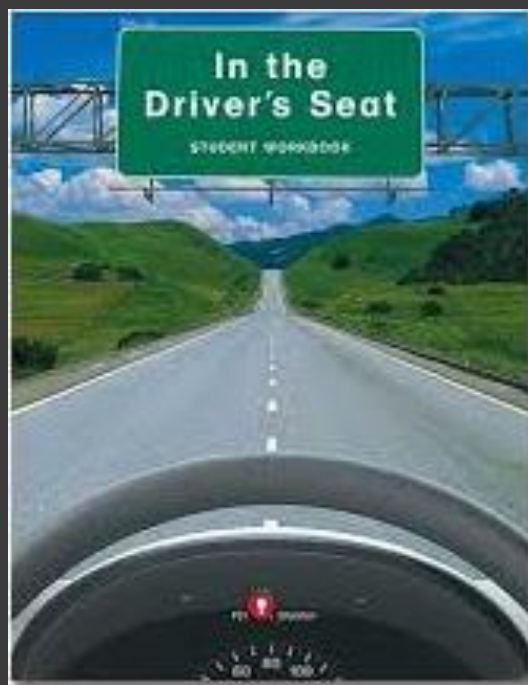
- Compacted curriculum – identify the start point and move forward
- Outcomes, learning activities, products
- Support for learning to target individual need
- Depth studies with rich learning
- Challenge and choice
- Development of learner skills
- Collaboration, critical thinking, creativity, communication, citizenship, character





Year 7 CURRICULUM (Stage 4)

Subjects	
English	Language
Mathematics	Technology
Science	PDHPE
History	Music / Visual Arts
Geography	Inquiry Learning
School Sport	



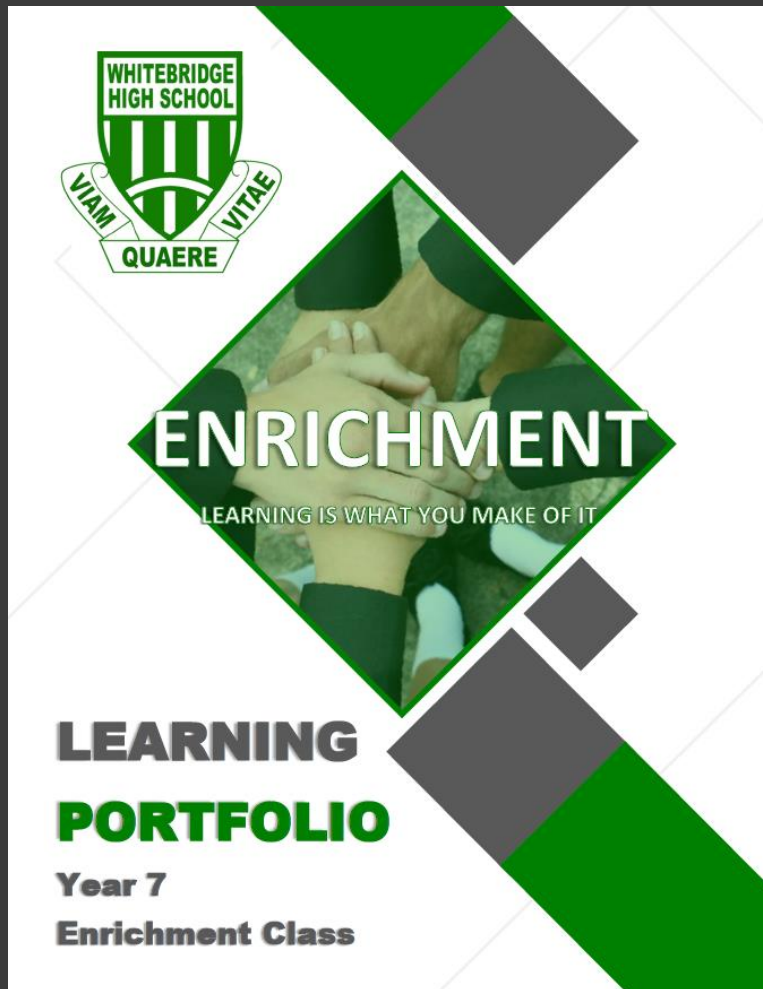
Expectations of Enrichment

- Participants not passengers
- Commitment to personal best
- Special programs with an authentic audience
 - WTV, community engagement, IBL projects, events identified by class teachers.
- Academic competitions
 - ICAS Maths, English, Digital Technology, Science and Writing (Class fee \$60)
- Active engagement in a minimum of 2 of the following areas
 - academic, cultural, sporting, leadership, creative and performing arts
- Attendance
 - Maintain high standards – towards 100%

Student Learning Portfolio

- Individual reflection on learning
- Self identified & documented progress
- School - home partnership
- High engagement with BYOD (all students should have access to a personal device)
- Self-reported grades (student ownership of learning and progress)
- HW .29 / SRG 1.33

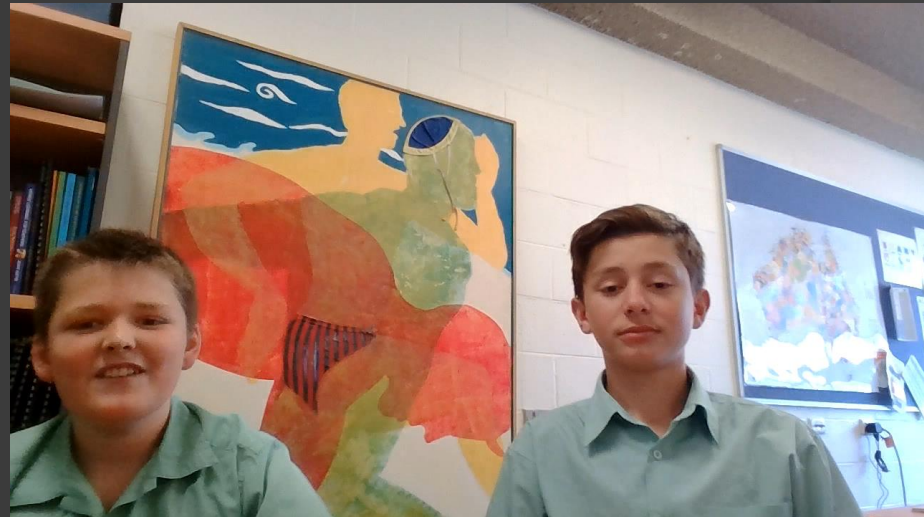
Holistic Learners



- Personal responsibility for learning growth
- Evidence Based
- Learning Conversations

STUDENT VOICE

Our students Luke & Cameron and Lily & Gabi share their experience through our Enrichment Programs in Year 7 and 8.



PATHWAYS

◎ YEAR 7

- ◎ High expectations
- ◎ Learning reflections
- ◎ Holistic approach to learning and school participation
- ◎ Challenge and enrichment
- ◎ Learning Portfolio
- ◎ ICAS participation

◎ YEAR 8

- Student self nomination
- Enrichment Pods
- Targeted learning skills program delivered by Deputy Principal
- Passion projects
- Digital Portfolio
- School Participation



Enrichment Class Process



- Nomination to be submitted for enrichment test
- \$25.00 payable directly to WHS (by 19th August)
If you need financial assistance please discuss this with your current school Principal
- Students complete the ICAS SCOUT Test at (Due to current restrictions, this will be completed at the students current Primary School) on Wednesday 26th August
- Students will complete the personal profile sheet / self nomination at the conclusion of their SCOUT test on the 26th August.
- Whitebridge High School Numeracy test
- The TORCH reading assessment
- Students not attending a partner school will be contacted in relation to the completion of the SCOUT, Numeracy and TORCH Tests.
- Input from Primary School Teachers



Year 7 Class Organisation

Year 7 will consist of both enrichment classes and mixed ability classes. All classes at Whitebridge High School engage in quality lessons differentiated to meet the learning needs of students. Activities for learning are engaging and varied and students benefit from teaching staff who are committed to fostering strong relationships and excellence in teaching and learning.

Placement in classes will be reliant on the following information.

Enrichment class

- Numeracy test
- TORCH reading assessment
- Primary teacher recommendation
- ICAS SCOUT Test
- Student completed personal profile

Mixed ability class

- Numeracy test
- TORCH reading assessment
- Information from primary school staff

This information also assists the school with placement of students in other programs and initiatives offered to year 7 throughout the year by the teachers. All students will be notified of their class placement on their first day of high school, Thursday 28 January 2021.

Testing Dates and Times:

All students within the Whitebridge Community of Schools	All students not from a school in the Whitebridge Community of Schools
<p>Numeracy test TORCH reading assessment</p> <p>Testing will be conducted by high school staff at each primary school. Students will complete the tests within their normal learning program. Dates of these tests will be determined by the school. Students will be advised by their teacher before testing commences.</p> <p>Members of the Whitebridge Community of Schools are Charlestown PS, Charlestown East PS, Charlestown South PS, Dudley PS, Kahibah PS, Redhead PS</p>	<p>Numeracy test TORCH reading assessment</p> <p>The testing date for all students who are not from the Whitebridge Community of schools will be completed at Whitebridge High school.</p> <p>All students (12 – 2pm) 9 November 2020</p> <ol style="list-style-type: none">1. Numeracy test2. TORCH reading assessment
<p>All students wishing to complete the Enrichment Class test</p> <p>Test fee to be paid to Whitebridge High School by Wednesday 19th August (covers test fee and individual student test report). If financial assistance is required to cover the test fee, please notify your child's current school Principal.</p> <p>Due to the current COVID restrictions, students will complete the test on Wednesday 26th August. Students will sit the test at their current school.</p> <p>Students will complete the personal profile sheet at the conclusion of the SCOUT Test.</p>	

✂.....
(Please return the permission note and payment to Whitebridge High School by Wednesday 19th August)

I would like my child to be considered for placement in the enrichment classes at Whitebridge High School. I enclose payment of \$25.00 to cover the SCOUT test fee and student test report.

Name of Student:	<input type="text"/>
Current School:	<input type="text"/>
Student Signature:	<input type="text"/>
Parent / Guardian:	<input type="text"/>
Contact email address	<input type="text"/>



PARTNERSHIP

- The secondary education facility for the Whitebridge Community of Schools
- Maximise outcomes by working together
- Home page – whitebridg-h.schools.nsw.gov.au
- External influences - parents, home, workplace, coaches
- Stay connected via facebook and skoolbag app
- Importance of support – Class Teachers, Year Adviser, Head Teacher Wellbeing



YEAR 7 CAMP





Question and Answer Session

- You are invited to a live Zoom meeting with the Principal to answer your questions about the Enrichment Program.
- When: Aug 3, 2020 04:00 PM Canberra, Melbourne, Sydney
- Register in advance for this meeting:
https://nsweducation.zoom.us/meeting/register/u5Upf-CsqT8sH9N64oEjZca_6W9b_iH8t-ko
- After registering, you will receive a confirmation email containing information about joining the meeting.
- Instructions on how to create a zoom account can be found here :
<https://www.youtube.com/watch?v=qsy2Ph6kSf8>